

10 Bicinen à2

Heinrich Faber (ca. 1500 - 1552)

Compendiolum musicae pro incipientibus, Nurenberg - 1594)

5. Sequitur exemplum

1. 

9 

6. Aliud exemplum

18 

24 

31 

38 

45 

1. Stimme 10 Bicinen à2

Heinrich Faber (ca. 1500 - 1552)

Compendiolum musicae pro incipientibus, Nurenberg - 1594)

5. Sequitur exemplum

7

[illegible]

13

18

6. Aliud exemplum

23

28

34

40

[illegible]

46

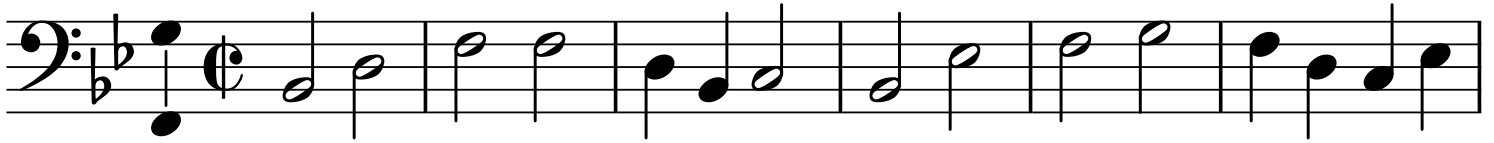
The bass line of 'The Rose Tree' is written in bass clef with a key signature of one flat (B-flat). The melody consists of the following notes: G2 (half note), A2 (quarter note), B-flat2 (quarter note), C3 (quarter note), D3 (quarter note), E3 (quarter note), F3 (quarter note), G3 (quarter note), A3 (quarter note), B-flat3 (quarter note), C4 (half note), and D4 (half note). The piece concludes with a double bar line.

2. Stimme 10 Bicinen à2

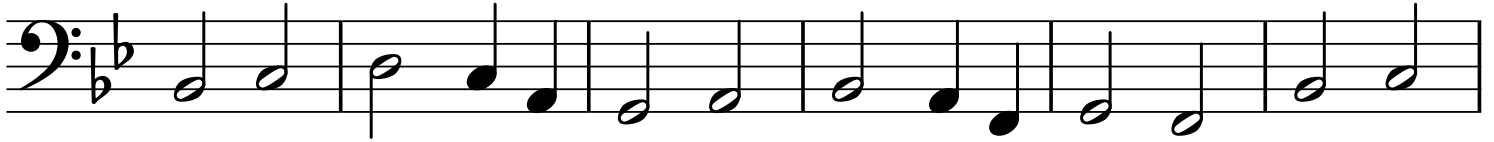
Heinrich Faber (ca. 1500 - 1552)

5. Sequitur exemplum

Compendiolum musicae pro incipientibus, Nurenberg - 1594)



7

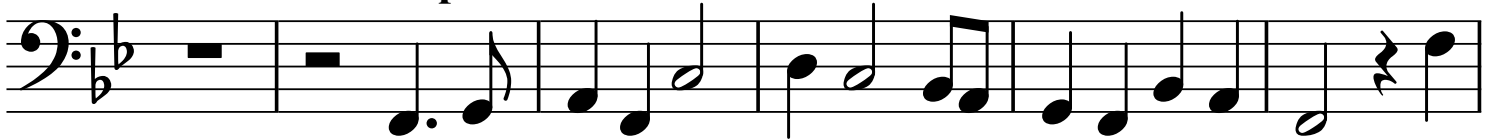


13

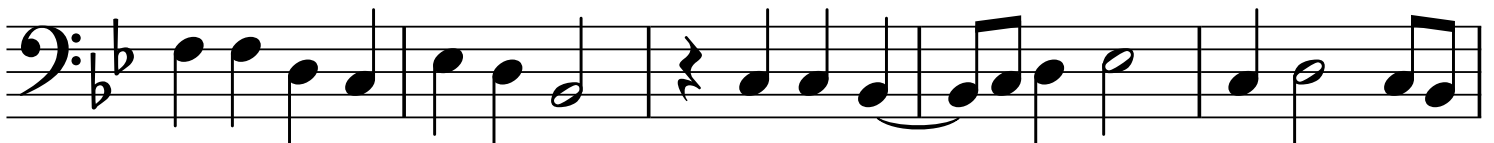


18

6. Aliud exemplum



24



29



35



40



46

